

# Wärtsilä 50DF

## Engine generating set

### PRODUCT LEAFLET

#### TECHNICAL DATA

Cylinder configurations	18V
Cylinder bore	500 mm
Piston stroke	580 mm
Speed	500 rpm (50 Hz) 514 rpm (60 Hz)
Brake mean effective pressure	20 bar
Mean piston speed	9.7 m/s (50 Hz) 10 m/s (60 Hz)



#### RATED ELECTRICAL POWER (kW)

Generating set type	50 Hz	60 Hz
18V50DF	16740	17220

#### GENERAL CONDITIONS

Rated electrical power is given at generator terminals and ISO 3046 conditions.

All Wärtsilä engines, in a standard configuration, have engine-driven lubricating oil, low- and high-temperature circuit cooling water pumps. Gas LHV >28 MJ/Nm<sup>3</sup>. Gas methane number >80. Gas pressure >5.1 bar(g) at plant inlet.

Please contact Wärtsilä for project-specific performance figures in case the gas does not fulfil the aforementioned criteria.

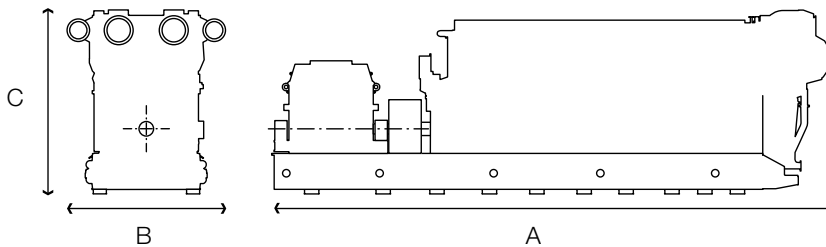
#### SPECIAL CONDITIONS

Site conditions and applicable emission limits may have an impact on the heat rate and efficiency. Please contact Wärtsilä for project-specific performance figures.

## DIMENSIONS (MM) AND WEIGHTS (TONNES)

Generating set <sup>1</sup> type	Length (A)	Width (B)	Height (C)	Dry weight <sup>2</sup> +/- 5%	Reduced transportation weight <sup>3</sup> +/- 5%
18V50DF	18781	4090	6020	369	215

### V-CONFIGURATION



- 1 The listed dimensions of generating set are maximum transportation dimensions, excluding the spring-mounted shock absorbers and turbocharger inlet cones for V engines.
- 2 Generating set dry weight includes spring-mounted shock absorbers and inlet cones, excludes lube oil and cooling fluids.
- 3 In case of limitations in maximum allowed transport weight, the generating set can be further disassembled for separate shipment of engine, generator and common baseframe. The listed reduced transportation weight is the weight of the heaviest of these parts. Please contact Wärtsilä in case transport weight needs to be further reduced.

### DISCLAIMER

The information contained in this leaflet is provided for informational purposes only and may not be incorporated, in whole or in part, into any agreement or proposal. No representation of any kind is made in respect of any information contained herein and Wärtsilä expressly disclaims any responsibility for, and does not guarantee, the correctness or the completeness of the information. The calculations and assumptions included in the information do not necessarily take into account all the factors that could be relevant in a particular case. Information in this leaflet shall not be construed as a guarantee or warranty of the performance of any Wärtsilä technology, equipment or installation.

[wartsila.com](http://wartsila.com)

WÄRTSILÄ® is a registered trademark. Copyright © 2016 Wärtsilä Corporation. Specifications are subject to change without prior notice.

